

## State Budget Implementation in April 2019



### Brief Report

Following the latest assessment of macroeconomic performance in early 2019, Cambodia has maintained strong economic growth up to 7.5 percent in 2018 and is projected to grow at a rate of 7.1 percent in 2019 while the inflation has been at manageably low rate coincided with the stability of the exchange rate.

In April 2019, according to the National Treasury preliminary data, the budgetary central government achieved the total domestic revenue of KHR **1,777.51** billion or in equivalent to **8.98** percent against the 2019 budget law, signifying the decrease by **9.21** percent compared to the same month in 2018. Of the total domestic revenue, the tax revenue accounted for 91.00 percent and non-tax revenue for 9.00 percent. As of April 2019, the total domestic revenue has been achieved by KHR **6,876.83** billion or in equivalent to **34.76** percent against the 2019 budget law, marking the increase by **8.89** percent compared to the same period last year. The growth has been mainly attributed to the increase of direct taxes (9.91 percent), indirect taxes (9.17 percent), international trade taxes (11.85 percent), and non-tax revenue (2.88 percent) while the capital revenue has slightly decreased (5.22 percent).

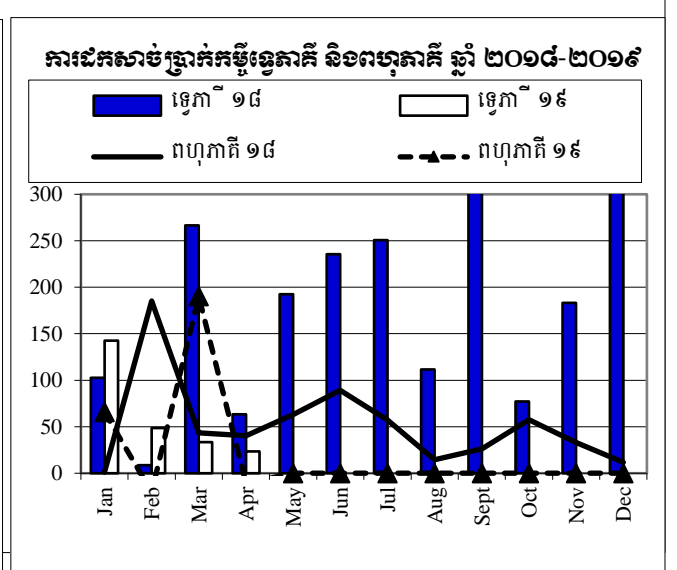
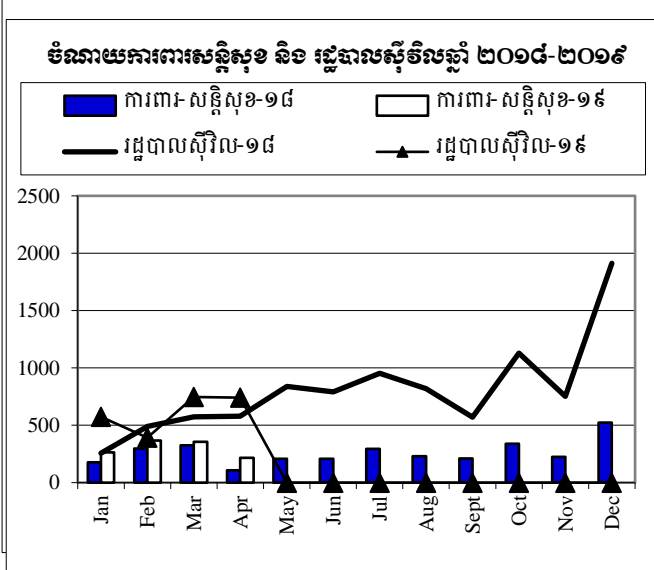
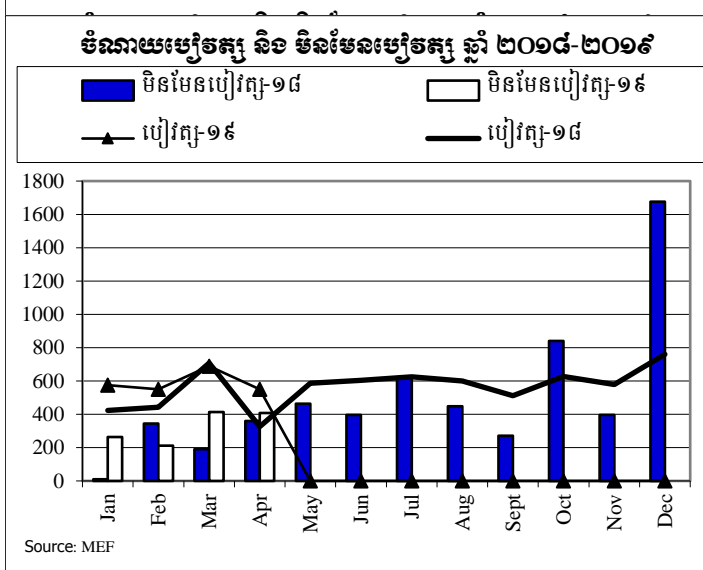
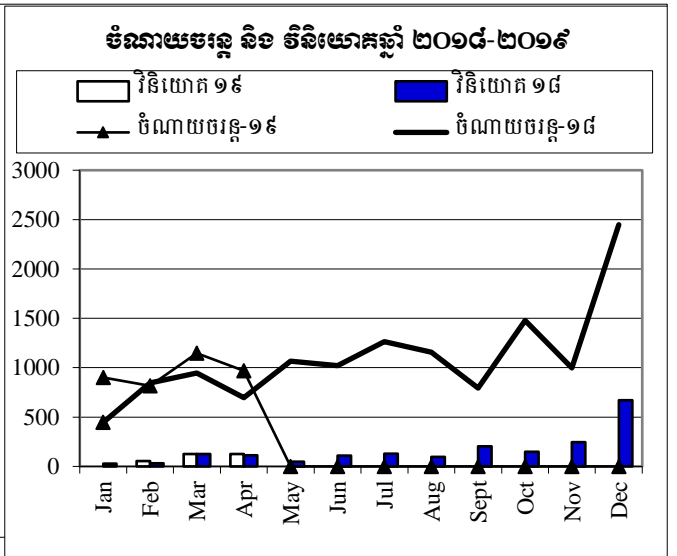
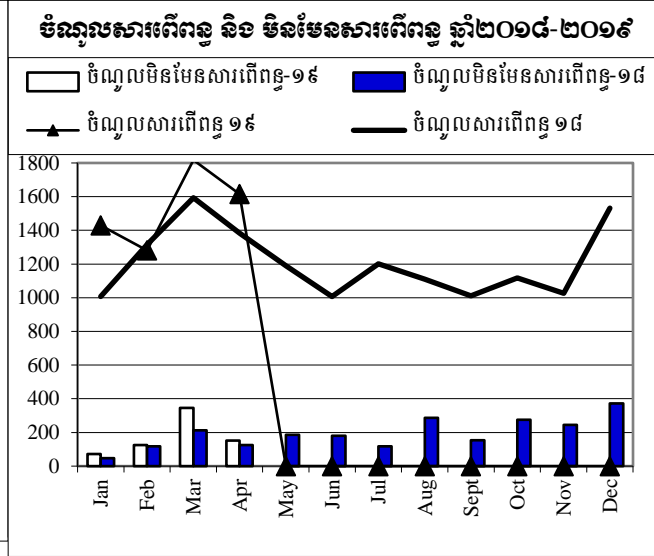
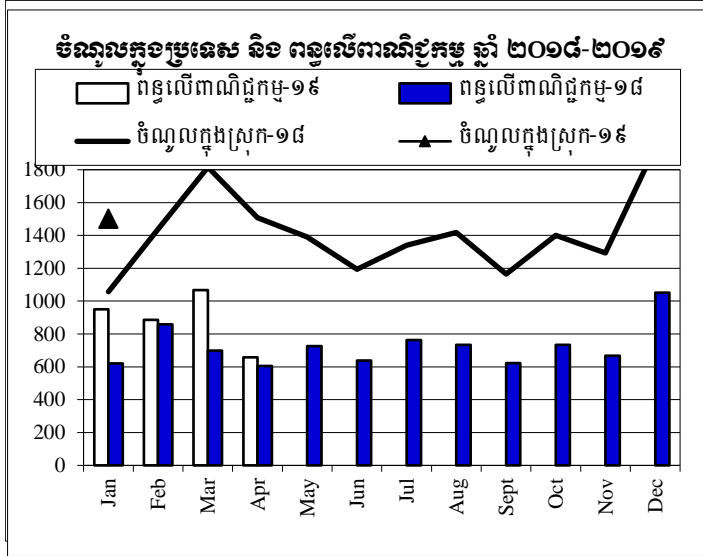
In April 2019, the budgetary central government, on the other hand, executed the total expenditures of KHR **1,196.29** billion or equal to **4.86** percent against the 2019 budget law, significantly decreased by **20.43** percent compared to the same month last year. As of April 2019, the total expenditures have been achieved KHR **4,970.88** billion or equal to **20.18** percent against the 2019 budget law, marking the slight decrease by **2.28** percent compared to the same period last year. The current expense execution has reached KHR **3,834.05** billion indicating the increase by **3.25** percent, of which the salary expense and other expenses account for KHR 2,364.08 billion and KHR 1,297.44 billion, respectively.

Based on this preliminary data, in conclusion, the implementation on domestic revenue collection have been well performed reflected by the increasing rate of **8.89** percent in contrast to the expenditure execution which have been decreased by **2.28** percent. As a result, the current budget balance has achieved the surplus of KHR **3,003.25** billion and overall budget balance has achieved the surplus of KHR **1,905.95 billion**.



# ការប្រៀបធៀបការអនុវត្តវិកា ឆ្នាំ ២០១៨-២០១៩

កិតជា មីលានរៀល



Source: MEF

តារាងប្រតិបត្តិការហិរញ្ញវត្ថុឆ្នាំ ២០១៩ TOFE: BUDGET IMPLEMENTATION FOR 2019

គិតជា ម៉ឺលានរៀល

	ច្បាប់ថវិកា ឆ្នាំ ២០១៩	ការអនុវត្ត /ច្បាប់	សរុប ការអនុវត្ត	មធ្យម ១៩	កុម្ភៈ ១៩	មីនា ១៩	មេសា ១៩	ឧសភា ១៩	មិថុនា ១៩	កក្កដា ១៩	សីហា ១៩	កញ្ញា ១៩	តុលា ១៩	វិច្ឆិកា ១៩	ធ្នូ ១៩
<b>I. DOMESTIC REVENUE</b>	<b>19,786.26</b>	<b>34.76%</b>	<b>6,876.83</b>	<b>1,501.11</b>	<b>1,408.58</b>	<b>2,189.63</b>	<b>1,777.51</b>	-	-	-	-	-	-	-	-
<b>I. CURRENT REVENUE</b>	<b>19,593.11</b>	<b>34.90%</b>	<b>6,837.29</b>	<b>1,501.11</b>	<b>1,405.26</b>	<b>2,162.30</b>	<b>1,768.63</b>	-	-	-	-	-	-	-	-
<b>a. TAX REVENUE</b>	<b>16,879.00</b>	<b>36.39%</b>	<b>6,142.46</b>	<b>1,429.02</b>	<b>1,280.06</b>	<b>1,817.31</b>	<b>1,616.07</b>	-	-	-	-	-	-	-	-
<b>Domestic tax revenue</b>	<b>14,468.00</b>	<b>37.12%</b>	<b>5,370.26</b>	<b>1,201.42</b>	<b>1,096.29</b>	<b>1,608.93</b>	<b>1,463.62</b>	-	-	-	-	-	-	-	-
Direct Tax (income tax, profits tax)	4,330.00	41.79%	1,809.37	250.81	210.61	541.93	806.01	-	-	-	-	-	-	-	-
Indirect Tax	10,138.00	35.12%	3,560.88	950.61	885.67	1,067.00	657.60	-	-	-	-	-	-	-	-
o.w/ - Excise Tax on specific goods	900.00	31.37%	282.29	65.09	77.08	70.07	70.04	-	-	-	-	-	-	-	-
o.w/ -Special Excise Tax(petroleum,others)	3,152.00	43.21%	1,361.84	380.81	339.66	389.26	252.10	-	-	-	-	-	-	-	-
o.w/ - Excise Tax on specific services	85.00	20.15%	17.13	4.57	6.69	4.59	1.27	-	-	-	-	-	-	-	-
Other tax revenues	99.50	40.45%	40.25	6.79	6.43	13.11	13.91	-	-	-	-	-	-	-	-
<b>Taxes on international trade</b>	<b>2,411.00</b>	<b>32.03%</b>	<b>772.20</b>	<b>227.60</b>	<b>183.77</b>	<b>208.39</b>	<b>152.45</b>	-	-	-	-	-	-	-	-
Taxes and duties on imports	2,361.00	32.15%	759.11	223.07	180.96	203.92	151.16	-	-	-	-	-	-	-	-
o.w/ -Customs duties on imports	1,563.00	33.90%	529.82	166.07	129.94	150.32	83.50	-	-	-	-	-	-	-	-
-Customs duties on petroleum products	340.00	26.23%	89.17	20.80	20.79	19.28	28.29	-	-	-	-	-	-	-	-
-Additional tax on oil product - Road maintenance	342.00	28.90%	98.85	24.35	21.33	17.61	35.56	-	-	-	-	-	-	-	-
-Import tax for materials used for medical production	5.50	115.90%	6.37	-	-	6.37	-	-	-	-	-	-	-	-	-
Taxes and duties on exports	50.00	26.19%	13.10	4.53	2.81	4.47	1.29	-	-	-	-	-	-	-	-
o.w/-Tax on rubber exports	10.00	38.41%	3.84	0.90	0.41	1.47	1.06	-	-	-	-	-	-	-	-
o.w/-Tax on rubber exports	33.00	20.51%	6.77	2.69	1.58	2.33	0.17	-	-	-	-	-	-	-	-
-Tax on export of agricultural products	6.50	34.55%	2.25	0.86	0.77	0.61	0.00	-	-	-	-	-	-	-	-
<b>b. NON TAX REVENUE</b>	<b>2,714.11</b>	<b>25.60%</b>	<b>694.84</b>	<b>72.09</b>	<b>125.20</b>	<b>344.98</b>	<b>152.57</b>	-	-	-	-	-	-	-	-
<b>State Property Revenue</b>	<b>127.42</b>	<b>146.38%</b>	<b>186.51</b>	<b>3.03</b>	<b>4.38</b>	<b>169.96</b>	<b>9.15</b>	-	-	-	-	-	-	-	-
Concession and rental land	106.17	17.53%	18.61	3.02576	4.38	4.06	7.15	-	-	-	-	-	-	-	-
Public Enterprises Income	21.25	790.11%	167.90	-	-	165.90	2.00	-	-	-	-	-	-	-	-
<b>Income from Sales, Rental of Properties and Services</b>	<b>2,295.83</b>	<b>19.59%</b>	<b>449.80</b>	<b>67.2459</b>	<b>118.66</b>	<b>144.56</b>	<b>119.34</b>	-	-	-	-	-	-	-	-
Income of administrative public enterprises -operational services (for profit)	955.98	18.83%	179.98	45.89	49.39	4.97	79.73	-	-	-	-	-	-	-	-
Sales of Property of Public Administration	103.67	33.80%	35.04	6.60	9.53	10.37	8.54	-	-	-	-	-	-	-	-
Administrative fees	806.24	24.50%	197.55	11.87	52.19	121.19	12.30	-	-	-	-	-	-	-	-
Sales of Services	75.10	27.46%	20.62	2.81	2.60	2.71	12.49	-	-	-	-	-	-	-	-
	322.16	4.04%	13.02	0.06	4.42	4.26	4.29	-	-	-	-	-	-	-	-

តារាងប្រតិបត្តិការហិរញ្ញវត្ថុឆ្នាំ ២០១៩ TOFE: BUDGET IMPLEMENTATION FOR 2019

គិតជា ម៉ឺលានរៀល

Billions of Riels	2019 C.B.L.	Total Act /BL2019	Total Act	Jan-19	Feb-19	Mar-19	Apr-19	May-19	Jun-19	Jul-19	Aug-19	Sep-19	Oct-19	Nov-19	Dec-19
<b>I. DOMESTIC REVENUE</b>	<b>19,786.26</b>	<b>34.76%</b>	<b>6,876.83</b>	<b>1,501.11</b>	<b>1,408.58</b>	<b>2,189.63</b>	<b>1,777.51</b>	-	-	-	-	-	-	-	-
<b>I.CURRENT REVENUE</b>	<b>19,593.11</b>	<b>34.90%</b>	<b>6,837.29</b>	<b>1,501.11</b>	<b>1,405.26</b>	<b>2,162.30</b>	<b>1,768.63</b>	-	-	-	-	-	-	-	-
<b>a. TAX REVENUE</b>	<b>16,879.00</b>	<b>36.39%</b>	<b>6,142.46</b>	<b>1,429.02</b>	<b>1,280.06</b>	<b>1,817.31</b>	<b>1,616.07</b>	-	-	-	-	-	-	-	-
<b>Domestic tax revenue</b>	<b>14,468.00</b>	<b>37.12%</b>	<b>5,370.26</b>	<b>1,201.42</b>	<b>1,096.29</b>	<b>1,608.93</b>	<b>1,463.62</b>	-	-	-	-	-	-	-	-
Direct Tax (income tax, profits tax)	4,330.00	41.79%	1,809.37	250.81	210.61	541.93	806.01	-	-	-	-	-	-	-	-
Indirect Tax	10,138.00	35.12%	3,560.88	950.61	885.67	1,067.00	657.60	-	-	-	-	-	-	-	-
o.w/ - Excise Tax on specific goods	900.00	31.37%	282.29	65.09	77.08	70.07	70.04	-	-	-	-	-	-	-	-
o.w/ -Special Excise Tax(petroleum,others)	3,152.00	43.21%	1,361.84	380.81	339.66	389.26	252.10	-	-	-	-	-	-	-	-
o.w/ - Excise Tax on specific services	85.00	20.15%	17.13	4.57	6.69	4.59	1.27	-	-	-	-	-	-	-	-
Other tax revenues	99.50	40.45%	40.25	6.79	6.43	13.11	13.91	-	-	-	-	-	-	-	-
<b>Taxes on international trade</b>	<b>2,411.00</b>	<b>32.03%</b>	<b>772.20</b>	<b>227.60</b>	<b>183.77</b>	<b>208.39</b>	<b>152.45</b>	-	-	-	-	-	-	-	-
Taxes and duties on imports	2,361.00	32.15%	759.11	223.07	180.96	203.92	151.16	-	-	-	-	-	-	-	-
o.w/ -Customs duties on imports	1,563.00	33.90%	529.82	166.07	129.94	150.32	83.50	-	-	-	-	-	-	-	-
-Customs duties on petroleum products	340.00	26.23%	89.17	20.80	20.79	19.28	28.29	-	-	-	-	-	-	-	-
-Additional tax on oil product - Road maintenance	342.00	28.90%	98.85	24.35	21.33	17.61	35.56	-	-	-	-	-	-	-	-
-Import tax for materials used for medical production	5.50	115.90%	6.37	-	-	6.37	-	-	-	-	-	-	-	-	-
Taxes and duties on exports	50.00	26.19%	13.10	4.53	2.81	4.47	1.29	-	-	-	-	-	-	-	-
o.w/-Tax on rubber exports	10.00	38.41%	3.84	0.90	0.41	1.47	1.06	-	-	-	-	-	-	-	-
-Tax on export of agricultural products	33.00	20.51%	6.77	2.69	1.58	2.33	0.17	-	-	-	-	-	-	-	-
o.w/-Tax on export of agricultural products	6.50	34.55%	2.25	0.86	0.77	0.61	0.00	-	-	-	-	-	-	-	-
<b>b. NON TAX REVENUE</b>	<b>2,714.11</b>	<b>25.60%</b>	<b>694.84</b>	<b>72.09</b>	<b>125.20</b>	<b>344.98</b>	<b>152.57</b>	-	-	-	-	-	-	-	-
<b>State Property Revenue</b>	<b>127.42</b>	<b>146.38%</b>	<b>186.51</b>	<b>3.03</b>	<b>4.38</b>	<b>169.96</b>	<b>9.15</b>	-	-	-	-	-	-	-	-
Concession and rental land	106.17	17.53%	18.61	3.02576	4.38	4.06	7.15	-	-	-	-	-	-	-	-
Public Enterprises Income	21.25	790.11%	167.90	-	-	165.90	2.00	-	-	-	-	-	-	-	-
<b>Income from Sales, Rental of Properties and Services</b>	<b>2,295.83</b>	<b>19.59%</b>	<b>449.80</b>	<b>67.2459</b>	<b>118.66</b>	<b>144.56</b>	<b>119.34</b>	-	-	-	-	-	-	-	-
Income of administrative public enterprises - operational services (for profit)	955.98	18.83%	179.98	45.89	49.39	4.97	79.73	-	-	-	-	-	-	-	-
Sales of Property of Public Administration	103.67	33.80%	35.04	6.60	9.53	10.37	8.54	-	-	-	-	-	-	-	-
Administrative fees	806.24	24.50%	197.55	11.87	52.19	121.19	12.30	-	-	-	-	-	-	-	-
Sales of Services	75.10	27.46%	20.62	2.81	2.60	2.71	12.49	-	-	-	-	-	-	-	-
	322.16	4.04%	13.02	0.06	4.42	4.26	4.29	-	-	-	-	-	-	-	-

តារាងប្រតិបត្តិការហិរញ្ញវត្ថុឆ្នាំ ២០១៩ TOFE: BUDGET IMPLEMENTATION FOR 2019

គិតជា ម៉ឺលានរៀល

Billions of Riels	2019 C.B.L.	Total Act /BL2019	Total Act	Jan-19	Feb-19	Mar-19	Apr-19	May-19	Jun-19	Jul-19	Aug-19	Sep-19	Oct-19	Nov-19	Dec-19
Other Rental of immovable properties	32.69	10.98%	3.59	0.02	0.53	1.05	1.99	-	-	-	-	-	-	-	-
<b>Other non tax</b>	<b>290.86</b>	<b>20.12%</b>	<b>58.52</b>	<b>1.82</b>	<b>2.16</b>	<b>30.46</b>	<b>24.08</b>	-	-	-	-	-	-	-	-
o.w/ Other exceptional revenues	-	...	23.84	1.50	0.14	1.62	20.57	-	-	-	-	-	-	-	-
<b>2. CAPITAL REVENUE</b>	<b>193.15</b>	<b>20.47%</b>	<b>39.54</b>	-	<b>3.33</b>	<b>27.33</b>	<b>8.88</b>	-	-	-	-	-	-	-	-
Other financial assets	193.15	20.47%	39.54	-	3.33	27.33	8.88	-	-	-	-	-	-	-	-
<b>II. BUDGET EXPENDITURE</b>	<b>24,859.08</b>	<b>20.00%</b>	<b>4,970.88</b>	<b>1,199.39</b>	<b>989.83</b>	<b>1,585.36</b>	<b>1,196.29</b>	-	-	-	-	-	-	-	-
<b>1. CURRENT EXPENDITURE</b>	<b>16,827.28</b>	<b>22.78%</b>	<b>3,834.05</b>	<b>902.01</b>	<b>817.51</b>	<b>1,146.40</b>	<b>968.12</b>	-	-	-	-	-	-	-	-
<b>a. Wages</b>	<b>7,862.54</b>	<b>30.07%</b>	<b>2,364.08</b>	<b>574.71</b>	<b>549.94</b>	<b>689.17</b>	<b>550.26</b>	-	-	-	-	-	-	-	-
Personnel charges-civil administrative	4,661.10	28.49%	1,327.92	315.65	293.16	341.43	377.67	-	-	-	-	-	-	-	-
o.w/ Diplomatic salary	4.33	26.98%	1.17	1.17	-	-	-	-	-	-	-	-	-	-	-
Personnel charges-national defence and security	3,201.44	32.37%	1,036.16	259.06	256.78	347.74	172.59	-	-	-	-	-	-	-	-
<b>b. Non wage</b>	<b>8,964.74</b>	<b>16.40%</b>	<b>1,469.97</b>	<b>327.30</b>	<b>267.57</b>	<b>457.23</b>	<b>417.87</b>	-	-	-	-	-	-	-	-
<b>-Purchases</b>	<b>1,617.94</b>	<b>14.01%</b>	<b>226.59</b>	<b>15.69</b>	<b>121.82</b>	<b>19.91</b>	<b>69.18</b>	-	-	-	-	-	-	-	-
Maintenance supplies	283.27	4.08%	11.56	1.94	1.45	2.82	5.35	-	-	-	-	-	-	-	-
Administration supplies	232.89	4.75%	11.07	1.13	0.94	3.36	5.64	-	-	-	-	-	-	-	-
Food and agricultural products	158.47	42.08%	66.69	-	35.63	0.25	30.81	-	-	-	-	-	-	-	-
Clothing and decoration	166.65	2.87%	4.79	3.69	-	0.64	0.45	-	-	-	-	-	-	-	-
Small tools, material, furniture and equip.	459.90	24.61%	113.16	8.64	80.63	7.85	16.05	-	-	-	-	-	-	-	-
Energy and water	165.95	11.33%	18.80	0.29	3.17	4.59	10.75	-	-	-	-	-	-	-	-
Health supplies and equipment	147.67	0.27%	0.40	-	-	0.26	0.14	-	-	-	-	-	-	-	-
Other supplies	3.17	4.18%	0.13	-	-	0.13	-	-	-	-	-	-	-	-	-
<b>-Services</b>	<b>1,730.70</b>	<b>9.91%</b>	<b>171.47</b>	<b>35.35</b>	<b>17.02</b>	<b>47.98</b>	<b>71.11</b>	-	-	-	-	-	-	-	-
o.w/ -Rentals and charges (furniture)	23.07	41.43%	9.56	8.41	0.32	0.46	0.36	-	-	-	-	-	-	-	-
-Maintenance and repairs	871.27	4.03%	35.07	3.81	0.97	12.70	17.59	-	-	-	-	-	-	-	-
<b>-Financial charges</b>	<b>525.09</b>	<b>32.86%</b>	<b>172.53</b>	<b>62.72</b>	<b>55.57</b>	<b>43.30</b>	<b>10.93</b>	-	-	-	-	-	-	-	-
-Interests on external debt	525.09	30.62%	160.78	62.61	50.12	38.47	9.58	-	-	-	-	-	-	-	-
<b>-Social Benefit</b>	<b>1,983.79</b>	<b>7.52%</b>	<b>149.15</b>	<b>6.31</b>	<b>25.94</b>	<b>80.29</b>	<b>36.61</b>	-	-	-	-	-	-	-	-
o.w/- Social Security Benefits	868.87	0.00%	-	-	-	-	-	-	-	-	-	-	-	-	-
-Social Assistance to citizens	914.18	13.51%	123.50	4.58	19.21	69.53	30.18	-	-	-	-	-	-	-	-
-Social Assistance to social and cultural entities	139.50	17.83%	24.87	1.67	6.63	10.24	6.32	-	-	-	-	-	-	-	-

តារាងប្រតិបត្តិការហិរញ្ញវត្ថុឆ្នាំ ២០១៩ TOFE: BUDGET IMPLEMENTATION FOR 2019

គិតជា ម៉ឺលានរៀល

Billions of Riels	2019 C.B.L.	Total Act /BL2019	Total Act	Jan-19	Feb-19	Mar-19	Apr-19	May-19	Jun-19	Jul-19	Aug-19	Sep-19	Oct-19	Nov-19	Dec-19
-Other social benefits	11.21	0.00%	-	-	-	-	-	-	-	-	-	-	-	-	-
<b>-Grants</b>	<b>1,552.86</b>	<b>38.31%</b>	<b>594.88</b>	207.11	15.47	153.77	218.53	-	-	-	-	-	-	-	-
<b>-Other non wage</b>	<b>1,554.35</b>	<b>9.99%</b>	<b>155.36</b>	0.13	31.75	111.97	11.51	-	-	-	-	-	-	-	-
o.w/ -Unanticipated Expense(Reserve)	1,019.01	0.00%	-	-	-	-	-	-	-	-	-	-	-	-	-
-Unexpected expenditures(Others exp.)	50.00	0.00%	-	-	-	-	-	-	-	-	-	-	-	-	-
<b>2. CAPITAL</b>	<b>8,031.80</b>	<b>14.15%</b>	<b>1,136.83</b>	<b>297.38</b>	<b>172.32</b>	<b>438.97</b>	<b>228.17</b>	-	-	-	-	-	-	-	-
<b>Domestic Financing</b>	<b>2,708.03</b>	<b>11.39%</b>	<b>308.58</b>	-	<b>55.13</b>	<b>126.65</b>	<b>126.80</b>	-	-	-	-	-	-	-	-
Tangible fixed assets and land	2,708.03	11.39%	308.58	-	55.13	126.65	126.80	-	-	-	-	-	-	-	-
<b>External assistance (Project)</b>	<b>5,323.77</b>	<b>15.56%</b>	<b>828.25</b>	<b>297.38</b>	<b>117.18</b>	<b>312.32</b>	<b>101.37</b>	-	-	-	-	-	-	-	-
<b>CURRENT DEF/SURPL.comt (I.I-II.1)</b>	<b>2,765.83</b>	<b>108.58%</b>	<b>3,003.25</b>	<b>599.10</b>	<b>587.74</b>	<b>1,015.90</b>	<b>800.51</b>	-	-	-	-	-	-	-	-
<b>CURRENT DEF/SURPL.cash(comt.+3)</b>	<b>2,765.83</b>	<b>108.58%</b>	<b>3,003.25</b>	<b>599.10</b>	<b>587.74</b>	<b>1,015.90</b>	<b>800.51</b>	-	-	-	-	-	-	-	-
<b>III. FINANCING</b>	<b>5,072.82</b>	<b>-37.57%</b>	<b>(1,905.95)</b>	<b>(301.71)</b>	<b>(418.75)</b>	<b>(604.27)</b>	<b>(581.22)</b>	-	-	-	-	-	-	-	-
<b>I. FOREIGN FINANCING</b>	<b>4,667.82</b>	<b>12.95%</b>	<b>604.62</b>	<b>264.60</b>	<b>102.85</b>	<b>159.20</b>	<b>77.98</b>	-	-	-	-	-	-	-	-
<b>a. Budget support</b>	<b>250.00</b>	<b>0.00%</b>	-	-	-	-	-	-	-	-	-	-	-	-	-
<b>-Grants-budget support</b>	125.00	0.00%	-	-	-	-	-	-	-	-	-	-	-	-	-
Capital Support	125.00	0.00%	-	-	-	-	-	-	-	-	-	-	-	-	-
Bilateral grant for investment expense	125.00	0.00%	-	-	-	-	-	-	-	-	-	-	-	-	-
<b>-Debt and related liabilities-budget support</b>	125.00	0.00%	-	-	-	-	-	-	-	-	-	-	-	-	-
Foreign borrowing	125.00	0.00%	-	-	-	-	-	-	-	-	-	-	-	-	-
Foreign borrowings from multilateral agencies	125.00	0.00%	-	-	-	-	-	-	-	-	-	-	-	-	-
<b>b. Project aid</b>	<b>5,323.77</b>	<b>16.52%</b>	<b>879.43</b>	<b>286.22</b>	<b>167.86</b>	<b>304.08</b>	<b>121.26</b>	-	-	-	-	-	-	-	-
<b>Spent</b>	<b>5,323.77</b>	<b>15.56%</b>	<b>828.25</b>	<b>297.38</b>	<b>117.18</b>	<b>312.32</b>	<b>101.37</b>	-	-	-	-	-	-	-	-
<b>-Grants</b>	<b>1,064.75</b>	<b>33.33%</b>	<b>354.92</b>	<b>88.73</b>	<b>88.73</b>	<b>88.73</b>	<b>88.73</b>	-	-	-	-	-	-	-	-
Bilateral grant for investment expense	1,064.75	33.33%	354.92	88.73	88.73	88.73	88.73	-	-	-	-	-	-	-	-
<b>-Debt and related liabilities</b>	<b>4,259.02</b>	<b>11.11%</b>	<b>473.34</b>	<b>208.65</b>	<b>28.45</b>	<b>223.59</b>	<b>12.64</b>	-	-	-	-	-	-	-	-
Foreign borrowing	4,259.02	11.11%	473.34	208.65	28.45	223.59	12.64	-	-	-	-	-	-	-	-
Foreign borrowings from multilateral agencies	4,259.02	5.28%	224.89	65.90	(20.31)	190.28	(10.98)	-	-	-	-	-	-	-	-
Foreign borrowings from bilateral agencies	-	...	248.45	142.75	48.76	33.31	23.63	-	-	-	-	-	-	-	-
<b>Pending</b>		...	<b>51.18</b>	<b>(11.16)</b>	<b>50.68</b>	<b>(8.24)</b>	<b>19.89</b>	-	-	-	-	-	-	-	-

**តារាងប្រតិបត្តិការហិរញ្ញវត្ថុឆ្នាំ ២០១៩ TOFE: BUDGET IMPLEMENTATION FOR 2019**

គិតជា ម៉ឺនដុល្លារ

	ច្បាប់ថវិកា ឆ្នាំ ២០១៩	ការអនុវត្ត /ច្បាប់	សរុប ការអនុវត្ត	មករា ១៩	កុម្ភៈ ១៩	មីនា ១៩	មេសា ១៩	ឧសភា ១៩	មិថុនា ១៩	កក្កដា ១៩	សីហា ១៩	កញ្ញា ១៩	តុលា ១៩	វិច្ឆិកា ១៩	ធ្នូ ១៩
c. Amortization on external debts	(905.95)	...	(274.81)	(21.63)	(65.01)	(144.88)	(43.29)	-	-	-	-	-	-	-	-
<b>2. DOMESTIC FINANCING</b>	-	...	(13.32)	(9.10)	(28.76)	12.60	11.95	-	-	-	-	-	-	-	-
a. Net bank financing (monetary suvey)	-	...	(2,819.80)	(218.76)	(120.71)	(1,478.95)	(1,001.39)	-	-	-	-	-	-	-	-
- Government's deposits		...	(2,819.80)	(218.76)	(120.71)	(1,478.95)	(1,001.39)	-	-	-	-	-	-	-	-
e. \$Acc.-gap between NBC &MEF		...	2,806.49	209.66	91.94	1,491.55	1,013.34	-	-	-	-	-	-	-	-
Error		...	0.00	0.00	(0.00)	0.00	0.00	-	-	-	-	-	-	-	-
Exchange rate (R/\$)		...		4,011	4,003	4,015	4,050	-	-	-	-	-	-	-	-
Provincial revenue	1,476.95	43.58%	643.73	154.85	124.77	241.56	122.55	-	-	-	-	-	-	-	-
o.w. provincial tax revenue	1,351.62	35.72%	482.74	119.61	119.24	124.00	119.89	-	-	-	-	-	-	-	-
o.w. prov. non-tax revenue	41.52	18.81%	7.81	2.40	1.64	2.25	1.52	-	-	-	-	-	-	-	-
o.w. prov. Transfer from central	83.81	182.77%	153.18	32.84	3.89	115.31	1.14	-	-	-	-	-	-	-	-
Provincial expenditure	1,148.55	31%	350.80	46.54	111.72	110.20	82.35	-	-	-	-	-	-	-	-
o.w. wage and salary	79.01	37%	29.31	3.77	12.85	5.39	7.30	-	-	-	-	-	-	-	-
o.w. non-wage	749.84	37%	280.38	37.73	83.41	88.02	71.22	-	-	-	-	-	-	-	-
	319.70	13%	41.12	5.03	15.46	16.79	3.84	-	-	-	-	-	-	-	-
Provincial Balance	328.39	89%	292.92	108.31	13.05	131.36	40.20	-	-	-	-	-	-	-	-
Contribution from casino and Lottery	229.02	0%	-	-	-	-	-	-	-	-	-	-	-	-	-
10 Ministry Spending by Program	7,495.38	19.78%	1,482.49	475.09	357.76	649.64	-	-	-	-	-	-	-	-	-

ថ្ងៃអង្គារ ៤ រោច ខែចេត្រ ឆ្នាំកុរ ឯកស័ក ព.ស. ២៥៦២

រាជធានីភ្នំពេញ ថ្ងៃទី២៣ ខែមេសា ឆ្នាំ២០១៩

**អគ្គនាយករង**

**អគ្គនាយកដ្ឋានគោលនយោបាយ**

**ប្រធាននាយកដ្ឋាន**

**នាយកដ្ឋានស្តីពី និងវិភាគសេដ្ឋកិច្ច**

ថ្ងៃអង្គារ ៤ រោច ខែចេត្រ ឆ្នាំកុរ ឯកស័ក ព.ស. ២៥៦២

រាជធានីភ្នំពេញ ថ្ងៃទី២៣ ខែមេសា ឆ្នាំ២០១៩

**ប្រធានការិយាល័យ**

**ស្តីពីហិរញ្ញវត្ថុសាធារណៈ**

ចំណាយបច្ចុប្បន្នក្រសួង ឆ្នាំ ២០១៩/ CURRENT BUDGET EXPENDITURE BY MINISTRY 2019

គិតជាលានរៀល

Million Riels	2019 C.B.L.	Total Act /BL2019		Jan-19	Feb-19	Mar-19	Apr-19	May-19	Jun-19	Jul-19	Aug-19	Sep-19	Oct-19	Nov-19	Dec-19
<b>Total Current Expenditures</b>	<b>16,827,280</b>	<b>22.8%</b>	<b>3,834,049</b>	<b>902,014</b>	<b>817,514</b>	<b>1,146,397</b>	<b>968,124</b>								
<b>I. General Administration</b>	<b>2,451,824</b>	<b>54.0%</b>	<b>1,325,109</b>	<b>423,125</b>	<b>154,088</b>	<b>381,076</b>	<b>366,820</b>								
01. Royal Palace	98,414	28.6%	28,132	2,679	8,067	8,836	8,550								
02. National Assembly	183,783	52.7%	96,809	50,998	-	-	45,811								
03. Senate	87,233	52.0%	45,389	25,936	-	18,961	492								
04. Constitutional Council	11,523	58.4%	6,730	4,054	-	-	2,676								
05.1 Council of Minister	415,409	16.8%	69,975	4,315	19,333	19,038	27,289								
05.4 CDC	15,430	6.2%	959	83	83	106	688								
07.2 Interior-Administration	206,039	30.9%	63,763	20,211	11,081	10,695	21,777								
08. Relations Assembly and Inspections	41,556	19.8%	8,209	1,425	1,505	1,782	3,497								
09. Foreign Affairs and Int'l Cooperation	148,849	18.3%	27,198	16,574	4,054	2,891	3,679								
10. Economy and Finance	796,115	112.1%	892,120	281,880	95,364	294,157	220,719								
14. Planning	91,138	23.4%	21,322	3,980	5,169	6,180	5,993								
28. Urbanization and Construction	162,996	17.5%	28,450	4,083	4,430	5,539	14,398								
30. National Election Committee	79,059	11.5%	9,093.44	1,708	1,164	3,835	2,386								
31. National Audit Authority	14,905	17.7%	2,638	639	646	643	710								
33.1 Anti-corruption Authority	45,856	28.3%	12,993	1,871	2,069	4,674	4,380								
34. Public Function	53,519	21.2%	11,327	2,687	1,125	3,740	3,775								
<b>II. Defense and Security</b>	<b>4,057,518</b>	<b>29.7%</b>	<b>1,205,646</b>	<b>264,367</b>	<b>368,379</b>	<b>356,515</b>	<b>216,385</b>	-	-	-	-	-	-	-	-
06. National Defense	2,416,438	30.1%	726,153	165,203	191,730	168,913	200,307								
07.1 Interior - Public Security	1,490,709	30.4%	453,381	93,857	171,085	181,150	7,289								
26. Justice	150,371	17.4%	26,112	5,307	5,564	6,452	8,788								
<b>III. Social Administrative</b>	<b>6,196,796</b>	<b>17.6%</b>	<b>1,092,861</b>	<b>183,358</b>	<b>256,058</b>	<b>346,792</b>	<b>306,653</b>	-	-	-	-	-	-	-	-
11. Information	85,179	30.6%	26,032	2,707	7,813	11,082	4,430								
12. Public Health	1,545,525	15.1%	233,298	32,093	42,132	95,396	63,677								
16. Education, Youth and Sport	2,949,604	23.7%	699,007	127,721	177,964	205,205	188,117								
18. Culture and Fine-Arts	180,146	10.6%	19,112	3,235	3,927	5,966	5,984								
19. Environment	89,742	18.2%	16,327	3,162	4,021	3,796	5,348								
21. Social Affair & Veteran	993,071	3.3%	33,168	4,474	6,506	11,025	11,163								
23. Public Worship and Religion	68,706	20.7%	14,218	2,528	3,021	3,498	5,172								
24. Woman Affairs	50,888	22.2%	11,277	1,776	1,741	3,178	4,582								
32. Labour and Vocational Training	233,936	17.3%	40,421	5,662	8,934	7,646	18,179								
<b>IV. Economy Administrative</b>	<b>1,506,888</b>	<b>14.0%</b>	<b>210,434</b>	<b>31,165</b>	<b>38,988</b>	<b>62,014</b>	<b>78,267</b>	-	-	-	-	-	-	-	-
05.3 Civil Aviation Secretariate	55,812	9.2%	5,139	1,144	1,197	1,206	1,592								
13. Industry, Mines and Energy	56,764	13.9%	7,872	1,324	1,528	2,256	2,765								
15. Commerce	148,168	15.0%	22,201	5,226	3,663	5,318	7,994								
17. Agriculture, Forestry and Fishery	264,924	18.6%	49,248	8,726	10,744	11,634	18,144								
20. Rural Development	183,295	7.6%	14,000	2,244	3,344	4,599	3,813								
22. Posts and Telecommunications	73,964	13.3%	9,856	1,613	2,151	3,005	3,087								
25. Public Works and Transport	409,345	11.7%	47,950	5,593	7,543	15,839	18,975								
27. Tourism	98,065	23.6%	23,111	1,645	3,608	9,680	8,178								
29. Water Resources and Meteorology	159,188	12.8%	20,379	2,134	3,302	4,603	10,340								
35. Industry and Handicrafts	57,363	18.6%	10,678	1,516	1,907	3,874	3,380								
<b>V. Miscellaneous</b>	<b>2,614,254</b>	<b>0.0%</b>		-	-	-	-	-	-	-	-	-	-	-	-
99.Unexpect Expenditure	2,614,254	0.0%		-	-	-	-	-	-	-	-	-	-	-	-



## NOTE



TOFE report was issued based on temporary data as following:

1. Data on Revenue at National level was received on May 29, 2019
2. Data on Expenditure at National Level was received on May 10, 2019
3. Data on Loan and Grant of multilateral and bilateral was retrieved on May 10, 2019
4. Financial Operation Data (Credit Bank) was received on May 10, 2019

TOFE report will be updated in the next released.

