

# State Budget Implementation in September 2018



## Brief Report

In the early 9 months of 2018, Cambodia's macroeconomic conditions remain stable supported by stable exchange rate and manageable inflation rate. At the same time, budget implementation has shown steady progress in the transformation of public financial management reform through efforts to improve, enhance efficiency and effectiveness of revenue mobilization and spending performance, in particular focusing on the priority targets of basic economic and social development.

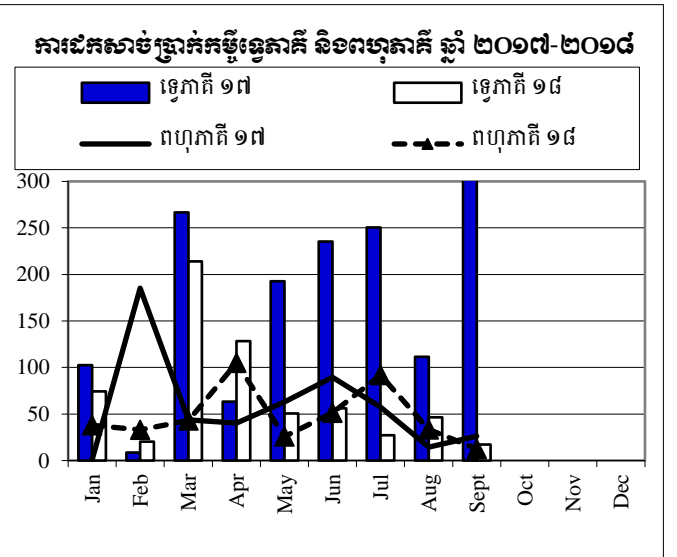
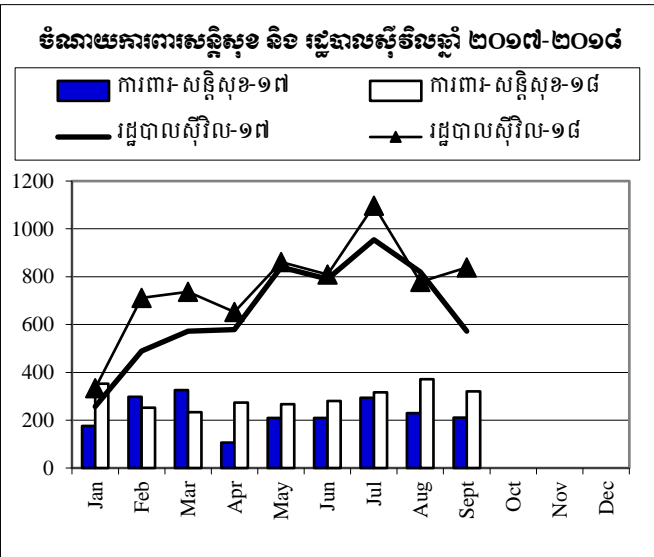
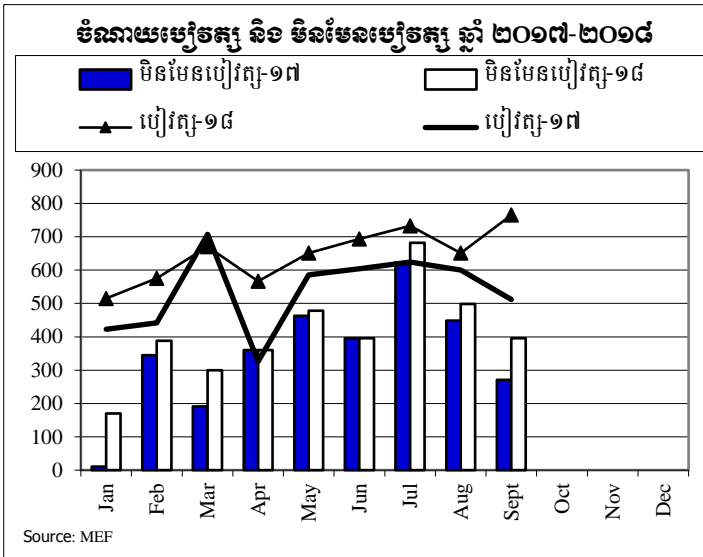
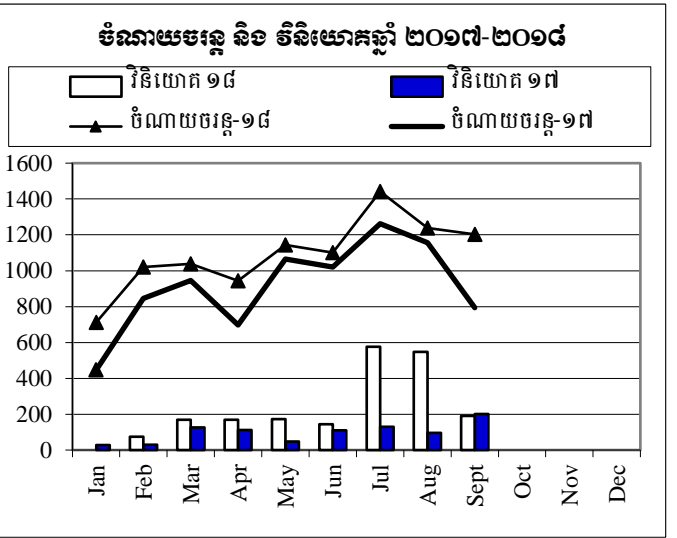
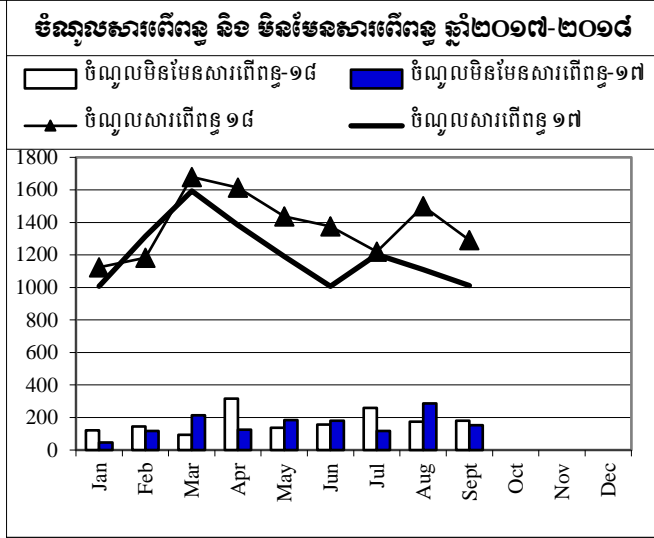
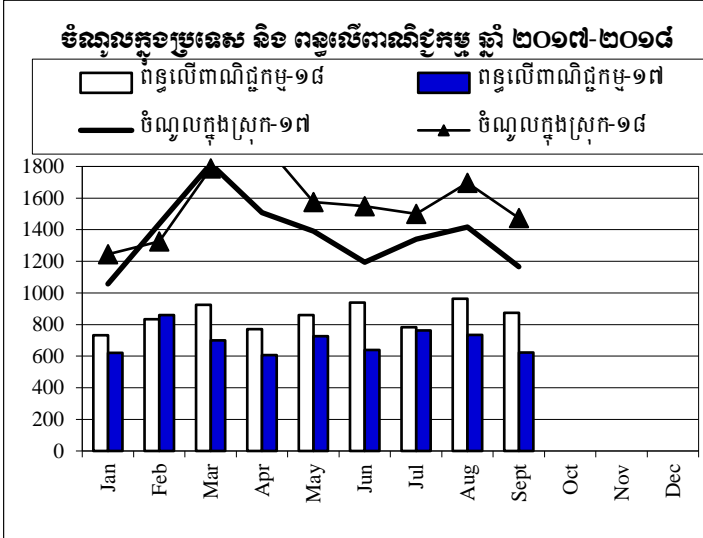
According to National Treasury preliminary data, in September 2018, Central government has achieved total domestic revenue of KHR 1,474.26 billion or increased by 26.5 percent compared to September 2017, supported by indirect tax, and international trade tax. Overall, as of September 2018, Central government has achieved total domestic revenue of KHR 14,108.14 billion, accounted for 80 percent of 2018 budget law or rose by 14.4 percent compared to the same period in 2017, in which indirect tax revenue increased by 22.5 percent, international trade tax revenue rose by 19.2 percent and non-tax revenue rose by 10.9 percent, respectively. For total expenditure, Central government has reached KHR 13,392.21 billion, accounted for 58.6 percent of the 2018 budget law, in which total current expenditure has achieved KHR 9,841.83 billion, accounted for 64% of the budget law or grew by 19.6 percent compared to 2017.

In all, as of September 2018, the current budget balance has achieved surplus of KHR 4,163.33 billion and overall budget balance has achieved surplus of KHR 715.93 billion. By observation, the performance of State budget implementation is better due to the adjustment of some of the spending procedures and related regulatory frameworks and the participatory implementation of precautionary spirit.



# ការប្រៀបធៀបការអនុវត្តវិវិកា ឆ្នាំ ២០១៧-២០១៨

គិតជា មីលានដុល្លារ



Source: MEF

ការងារប្រតិបត្តិការហិរញ្ញវត្ថុឆ្នាំ ២០១៨ TOFE: BUDGET IMPLEMENTATION FOR 2018

គិតជា ម៉ឺលានរៀល

Billions of Riels	2018 C.B.L.	Implementation 9 months =75.0%	Jan-18	Feb-18	Mar-18	Apr-18	May-18	Jun-18	Jul-18	Aug-18	Sep-18	Oct-18	Nov-18	Dec-18	
<b>I. DOMESTIC REVENUE</b>	<b>17,640.20</b>	<b>79.98%</b>	<b>14,108.14</b>	<b>1,244.53</b>	<b>1,326.40</b>	<b>1,786.71</b>	<b>1,957.82</b>	<b>1,574.75</b>	<b>1,548.05</b>	<b>1,499.25</b>	<b>1,696.37</b>	<b>1,474.26</b>	-	-	-
<b>I.CURRENT REVENUE</b>	<b>17,460.01</b>	<b>80.21%</b>	<b>14,005.15</b>	<b>1,244.53</b>	<b>1,326.40</b>	<b>1,773.83</b>	<b>1,928.98</b>	<b>1,574.75</b>	<b>1,531.45</b>	<b>1,480.85</b>	<b>1,673.59</b>	<b>1,470.76</b>	-	-	-
<b>a. TAX REVENUE</b>	<b>15,075.56</b>	<b>82.39%</b>	<b>12,420.47</b>	<b>1,123.85</b>	<b>1,181.52</b>	<b>1,679.55</b>	<b>1,613.44</b>	<b>1,436.83</b>	<b>1,375.11</b>	<b>1,220.88</b>	<b>1,499.00</b>	<b>1,290.28</b>	-	-	-
<b>Domestic tax revenue</b>	<b>12,934.06</b>	<b>83.08%</b>	<b>10,745.06</b>	<b>966.15</b>	<b>1,010.41</b>	<b>1,493.22</b>	<b>1,438.20</b>	<b>1,225.28</b>	<b>1,186.89</b>	<b>1,048.19</b>	<b>1,251.41</b>	<b>1,125.33</b>	-	-	-
Direct Tax (income tax, profits tax)	3,899.30	78.53%	3,062.10	234.78	176.19	567.84	667.47	364.82	247.27	264.64	287.28	251.82	-	-	-
Indirect Tax	9,034.76	85.04%	7,682.96	731.36	834.22	925.38	770.72	860.46	939.62	783.55	964.13	873.51	-	-	-
o.w/ - Excise Tax on specific goods	729.00	85.07%	620.17	80.18	110.98	68.14	50.16	45.16	70.14	50.16	75.13	70.13	-	-	-
o.w/ -Special Excise Tax(petroleum,others)	3,165.00	90.95%	2,878.61	268.80	316.53	358.74	311.75	353.24	324.87	284.18	382.50	278.00	-	-	-
o.w/ - Excise Tax on specific services	80.00	64.19%	51.35	5.65	5.45	8.56	4.62	4.62	7.64	2.63	6.61	5.57	-	-	-
Other tax revenues	98.50	100.77%	99.26	4.06	11.74	8.84	9.72	8.25	10.08	12.07	21.00	13.49	-	-	-
<b>Taxes on international trade</b>	<b>2,141.50</b>	<b>78.24%</b>	<b>1,675.41</b>	<b>157.71</b>	<b>171.12</b>	<b>186.33</b>	<b>175.24</b>	<b>211.55</b>	<b>188.22</b>	<b>172.69</b>	<b>247.60</b>	<b>164.95</b>	-	-	-
Taxes and duties on imports	2,095.70	78.20%	1,638.88	150.22	167.29	182.93	172.82	207.79	185.13	168.61	242.99	161.10	-	-	-
o.w/ -Customs duties on imports	1,450.00	78.32%	1,135.68	121.01	110.13	124.76	109.90	144.52	127.99	131.68	146.90	118.79	-	-	-
-Customs duties on petroleum products	220.00	76.92%	169.21	8.94	16.01	18.56	22.68	24.68	18.23	15.50	29.25	15.36	-	-	-
-Additional tax on oil product - Road maintenance	320.00	73.73%	235.95	11.22	31.48	29.56	31.77	27.66	26.17	9.77	52.38	15.93	-	-	-
-Import tax for materials used for medical production	2.20	99.95%	2.20	-	-	0.88	-	-	1.31	-	-	0.01	-	-	-
Taxes and duties on exports	45.80	79.77%	36.53	7.49	3.83	3.40	2.42	3.76	3.09	4.08	4.61	3.85	-	-	-
o.w/-Tax on rubber exports	10.00	72.79%	7.28	3.30	1.45	0.84	0.42	0.32	0.36	0.23	0.14	0.23	-	-	-
-Tax on export of agricultural products	2.30	317.06%	7.29	0.69	0.49	0.64	0.93	1.25	0.68	1.47	0.75	0.40	-	-	-
<b>b. NON TAX REVENUE</b>	<b>2,384.44</b>	<b>66.46%</b>	<b>1,584.68</b>	<b>120.68</b>	<b>144.88</b>	<b>94.28</b>	<b>315.54</b>	<b>137.92</b>	<b>156.34</b>	<b>259.98</b>	<b>174.59</b>	<b>180.47</b>	-	-	-
<b>State Property Revenue</b>	<b>104.52</b>	<b>147.19%</b>	<b>153.83</b>	<b>3.73</b>	<b>2.35</b>	<b>1.64</b>	<b>124.88</b>	<b>6.88</b>	<b>1.76</b>	<b>3.89</b>	<b>7.03</b>	<b>1.67</b>	-	-	-
Concession and rental land	85.07	65.59%	55.80	3.72747	2.35	1.64	27.84	6.88	1.76	3.89	7.03	0.67	-	-	-
Public Enterprises Income	19.45	504.04%	98.04	-	-	-	97.04	-	-	-	-	1.00	-	-	-
<b>Income from Sales, Rental of Properties and Services</b>	<b>2,036.61</b>	<b>61.74%</b>	<b>1,257.49</b>	<b>116.6278</b>	<b>142.23</b>	<b>82.16</b>	<b>161.53</b>	<b>127.49</b>	<b>99.83</b>	<b>221.19</b>	<b>152.87</b>	<b>153.57</b>	-	-	-
Income of administrative public enterprises - operational services (for profit)	804.02	62.32%	501.08	51.62	82.11	5.37	54.85	56.36	48.84	73.41	81.80	46.71	-	-	-
Sales of Property of Public Administration	88.05	92.39%	81.35	3.57	7.16	7.76	8.33	14.37	13.92	11.62	7.33	7.29	-	-	-
Administrative fees	782.10	58.51%	457.64	59.06	44.16	55.09	70.16	30.76	7.59	118.83	38.99	33.01	-	-	-
Sales of Services	65.93	71.74%	47.30	1.29	1.60	2.57	2.99	3.33	4.85	12.79	5.37	12.50	-	-	-
	268.33	60.98%	163.63	0.18	6.79	11.07	24.32	21.15	23.70	4.22	18.59	53.60	-	-	-

ការងារប្រតិបត្តិការហិរញ្ញវត្ថុឆ្នាំ ២០១៨ TOFE: BUDGET IMPLEMENTATION FOR 2018

គិតជា ម៉ឺលានរៀល

Billions of Riels	2018 C.B.L.	Implementation 9 months =75.0%	Jan-18	Feb-18	Mar-18	Apr-18	May-18	Jun-18	Jul-18	Aug-18	Sep-18	Oct-18	Nov-18	Dec-18	
Other Rental of immovable properties	28.18	23.10%	6.51	0.91	0.40	0.31	0.88	1.53	0.93	0.31	0.78	0.46	-	-	-
<b>Other non tax</b>	<b>243.32</b>	<b>71.25%</b>	<b>173.35</b>	<b>0.32</b>	<b>0.29</b>	<b>10.48</b>	<b>29.13</b>	<b>3.55</b>	<b>54.76</b>	<b>34.90</b>	<b>14.69</b>	<b>25.24</b>	-	-	-
<b>2. CAPITAL REVENUE</b>	<b>180.19</b>	<b>57.15%</b>	<b>102.98</b>	-	-	<b>12.88</b>	<b>28.83</b>	-	<b>16.59</b>	<b>18.40</b>	<b>22.77</b>	<b>3.51</b>	-	-	-
Other financial assets	180.19	57.15%	102.98	-	-	12.88	28.83	-	16.59	18.40	22.77	3.51	-	-	-
<b>II. BUDGET EXPENDITURE</b>	<b>22,690.91</b>	<b>59.02%</b>	<b>13,392.21</b>	<b>873.03</b>	<b>1,197.42</b>	<b>1,512.20</b>	<b>1,393.58</b>	<b>1,440.86</b>	<b>1,402.79</b>	<b>2,186.32</b>	<b>1,914.00</b>	<b>1,472.00</b>	-	-	-
<b>1. CURRENT EXPENDITURE</b>	<b>15,218.17</b>	<b>64.67%</b>	<b>9,841.83</b>	<b>711.67</b>	<b>1,021.04</b>	<b>1,037.55</b>	<b>943.16</b>	<b>1,143.58</b>	<b>1,101.71</b>	<b>1,442.14</b>	<b>1,237.84</b>	<b>1,203.15</b>	-	-	-
<b>a. Wages</b>	<b>7,914.92</b>	<b>73.53%</b>	<b>5,820.14</b>	<b>515.03</b>	<b>574.88</b>	<b>670.36</b>	<b>566.57</b>	<b>650.99</b>	<b>693.53</b>	<b>732.43</b>	<b>651.30</b>	<b>765.04</b>	-	-	-
Personnel charges-civil administrative	6,875.20	48.56%	3,338.77	233.43	335.75	448.77	306.28	397.44	427.49	431.33	298.29	460.00	-	-	-
o.w/ Diplomatic salary	6.40	45.26%	2.89	-	1.18	-	-	0.92	0.04	-	0.76	-	-	-	-
Personnel charges-national defence and security	1,039.73	238.66%	2,481.36	281.60	239.13	221.59	260.29	253.56	266.04	301.10	353.01	305.04	-	-	-
<b>b. Non wage</b>	<b>7,303.24</b>	<b>55.07%</b>	<b>4,021.70</b>	<b>196.64</b>	<b>446.16</b>	<b>367.20</b>	<b>376.59</b>	<b>492.59</b>	<b>408.18</b>	<b>709.71</b>	<b>586.54</b>	<b>438.11</b>	-	-	-
<b>-Purchases</b>	<b>1,549.76</b>	<b>58.79%</b>	<b>911.15</b>	<b>137.90</b>	<b>13.59</b>	<b>23.97</b>	<b>60.84</b>	<b>156.94</b>	<b>92.32</b>	<b>164.44</b>	<b>186.41</b>	<b>74.75</b>	-	-	-
Maintenance supplies	266.84	46.88%	125.10	1.70	0.60	3.28	6.30	7.27	11.13	8.99	76.37	9.46	-	-	-
Administration supplies	257.35	50.11%	128.97	0.96	0.41	4.89	6.11	12.11	29.87	26.80	34.44	13.37	-	-	-
Food and agricultural products	145.89	73.38%	107.05	13.00	10.51	3.17	25.69	11.48	3.82	26.56	6.73	6.10	-	-	-
Clothing and decoration	161.59	39.60%	63.99	8.24	0.05	1.02	2.96	3.25	1.55	8.05	33.86	5.01	-	-	-
Small tools, material, furniture and equip.	393.50	66.50%	261.66	113.99	0.70	2.92	15.16	19.56	15.18	52.07	17.20	24.88	-	-	-
Energy and water	159.91	47.29%	75.63	-	1.32	8.35	4.02	11.91	11.23	8.74	15.36	14.71	-	-	-
Health supplies and equipment	162.02	91.24%	147.83	-	-	0.20	0.60	91.37	19.13	33.23	2.20	1.11	-	-	-
Other supplies	2.66	34.66%	0.92	-	-	0.13	-	-	0.42	-	0.25	0.11	-	-	-
<b>-Services</b>	<b>1,743.13</b>	<b>44.37%</b>	<b>773.40</b>	<b>21.88</b>	<b>27.85</b>	<b>43.61</b>	<b>78.13</b>	<b>69.58</b>	<b>83.21</b>	<b>162.03</b>	<b>148.03</b>	<b>139.07</b>	-	-	-
o.w/ -Rentals and charges (furniture)	23.36	69.99%	16.35	0.06	0.05	9.11	1.22	2.29	0.20	0.93	2.18	0.31	-	-	-
-Maintenance and repairs	832.39	33.33%	277.40	3.29	11.38	5.38	17.63	26.32	28.36	53.94	64.21	66.90	-	-	-
<b>-Financial charges</b>	<b>387.48</b>	<b>91.30%</b>	<b>353.78</b>	<b>26.40</b>	<b>57.81</b>	<b>67.07</b>	<b>16.49</b>	<b>14.67</b>	<b>12.46</b>	<b>27.53</b>	<b>88.48</b>	<b>42.88</b>	-	-	-
o.w/ -Interests on domestic debt	-		0.17	-	-	-	-	0.17	-	-	-	-	-	-	-
-Interests on external debt	387.48		319.00	26.40	57.74	57.70	11.76	13.79	3.08	27.10	83.79	37.64	-	-	-
<b>-Social Benefit</b>	<b>996.30</b>	<b>62.03%</b>	<b>618.04</b>	<b>9.47</b>	<b>19.49</b>	<b>74.18</b>	<b>27.92</b>	<b>178.58</b>	<b>105.49</b>	<b>119.34</b>	<b>39.65</b>	<b>43.92</b>	-	-	-
-Social Assistance to citizens	808.77	66.85%	540.66	7.08	16.06	55.41	20.67	172.10	94.42	109.25	30.65	35.03	-	-	-
-Social Assistance to social and cultural entities	131.68	54.86%	72.23	2.39	3.39	18.52	7.12	6.13	8.83	9.22	8.87	7.77	-	-	-
-Other social benefits	8.85	25.00%	2.21	-	-	-	-	-	2.21	-	-	-	-	-	-

ការងារប្រតិបត្តិការហិរញ្ញវត្ថុ ២០១៨ TOFE: BUDGET IMPLEMENTATION FOR 2018

គិតជា ម៉ឺនដុល្លារ

Billions of Riels	2018 C.B.L.	Implementation 9 months =75.0%	Jan-18	Feb-18	Mar-18	Apr-18	May-18	Jun-18	Jul-18	Aug-18	Sep-18	Oct-18	Nov-18	Dec-18	
-Grants	1,473.70	72.61%	1,070.09	0.99	298.15	67.59	192.28	72.44	44.37	224.73	121.46	48.08	-	-	-
-Other non wage	1,152.88	25.61%	295.24	-	29.27	90.77	0.93	0.37	70.33	11.65	2.51	89.41	-	-	-
<b>2. CAPITAL</b>	<b>7,472.74</b>	<b>47.51%</b>	<b>3,550.37</b>	<b>161.36</b>	<b>176.39</b>	<b>474.64</b>	<b>450.42</b>	<b>297.28</b>	<b>301.08</b>	<b>744.18</b>	<b>676.16</b>	<b>268.85</b>	-	-	-
<b>Domestic Financing</b>	<b>2,925.80</b>	<b>69.71%</b>	<b>2,039.54</b>	-	<b>73.81</b>	<b>168.53</b>	<b>168.05</b>	<b>171.84</b>	<b>144.41</b>	<b>575.89</b>	<b>547.12</b>	<b>189.89</b>	-	-	-
Tangible fixed assets and land	2,925.80	69.70%	2,039.32	-	73.81	168.53	168.05	171.84	144.41	575.89	546.90	189.89	-	-	-
External assistance (Project)	4,546.94	33.23%	1,510.84	161.36	102.58	306.12	282.37	125.44	156.66	168.30	129.05	78.96	-	-	-
<b>CURRENT DEF/SURPL.comt (I-I-II)</b>	<b>2,241.84</b>	<b>185.71%</b>	<b>4,163.32</b>	<b>532.86</b>	<b>305.36</b>	<b>736.28</b>	<b>985.82</b>	<b>431.17</b>	<b>429.75</b>	<b>38.72</b>	<b>435.75</b>	<b>267.61</b>	-	-	-
<b>OVERALL DEF/SURPL.comt (I-II)</b>	<b>(5,050.71)</b>	<b>-14.17%</b>	<b>715.93</b>	<b>371.50</b>	<b>128.98</b>	<b>274.51</b>	<b>564.23</b>	<b>133.89</b>	<b>145.26</b>	<b>(687.07)</b>	<b>(217.64)</b>	<b>2.26</b>	-	-	-
<b>CURRENT DEF/SURPL.cash(comt.+3)</b>	<b>2,241.84</b>	<b>185.71%</b>	<b>4,163.32</b>	<b>532.86</b>	<b>305.36</b>	<b>736.28</b>	<b>985.82</b>	<b>431.17</b>	<b>429.75</b>	<b>38.72</b>	<b>435.75</b>	<b>267.61</b>	-	-	-
<b>OVERALL DEF/SURPL.cash (com.+3)</b>	<b>(5,050.71)</b>	<b>-14.17%</b>	<b>715.93</b>	<b>371.50</b>	<b>128.98</b>	<b>274.51</b>	<b>564.23</b>	<b>133.89</b>	<b>145.26</b>	<b>(687.07)</b>	<b>(217.64)</b>	<b>2.26</b>	-	-	-
<b>III. FINANCING</b>	<b>5,050.71</b>	<b>-14.17%</b>	<b>(715.93)</b>	<b>(371.50)</b>	<b>(128.98)</b>	<b>(274.51)</b>	<b>(564.23)</b>	<b>(133.89)</b>	<b>(145.26)</b>	<b>687.07</b>	<b>217.64</b>	<b>(2.26)</b>	-	-	-
<b>1. FOREIGN FINANCING</b>	<b>4,059.55</b>	<b>27.63%</b>	<b>1,121.50</b>	<b>154.74</b>	<b>37.67</b>	<b>209.62</b>	<b>211.08</b>	<b>218.29</b>	<b>166.09</b>	<b>44.57</b>	<b>78.82</b>	<b>0.62</b>	-	-	-
<b>a. Budget support</b>	<b>250.00</b>	<b>84.96%</b>	<b>212.41</b>	<b>13.27</b>	-	<b>8.97</b>	<b>22.87</b>	<b>101.50</b>	<b>14.13</b>	-	-	<b>51.67</b>	-	-	-
-Grants-budget support	125.00	134.03%	167.53	-	-	8.97	22.87	101.50	0.97	-	-	33.23	-	-	-
Capital Support	125.00	134.03%	167.53	-	-	8.97	22.87	101.50	0.97	-	-	33.23	-	-	-
Bilateral grant for investment expense	125.00	134.03%	167.53	-	-	8.97	22.87	101.50	0.97	-	-	33.23	-	-	-
-Debt and related liabilities-budget support	125.00	35.90%	44.88	13.27	-	-	-	-	13.16	-	-	18.45	-	-	-
Foreign borrowing	125.00	35.90%	44.88	13.27	-	-	-	-	13.16	-	-	18.45	-	-	-
Foreign borrowings from multilateral agencies	125.00	35.90%	44.88	13.27	-	-	-	-	13.16	-	-	18.45	-	-	-
<b>b. Project aid</b>	<b>4,546.94</b>	<b>32.47%</b>	<b>1,476.23</b>	<b>155.32</b>	<b>86.45</b>	<b>314.91</b>	<b>241.20</b>	<b>151.69</b>	<b>162.38</b>	<b>145.36</b>	<b>124.75</b>	<b>94.19</b>	-	-	-
<b>Spent</b>	<b>4,546.94</b>	<b>33.23%</b>	<b>1,510.84</b>	<b>161.36</b>	<b>102.58</b>	<b>306.12</b>	<b>282.37</b>	<b>125.44</b>	<b>156.66</b>	<b>168.30</b>	<b>129.05</b>	<b>78.96</b>	-	-	-
-Grants	591.10	75.00%	443.33	49.26	49.26	49.26	49.26	49.26	49.26	49.26	49.26	49.26	-	-	-
Bilateral grant for investment expense	591.10	75.00%	443.33	49.26	49.26	49.26	49.26	49.26	49.26	49.26	49.26	49.26	-	-	-
-Debt and related liabilities	3,955.84	26.99%	1,067.51	112.10	53.32	256.86	233.11	76.18	107.40	119.04	79.79	29.71	-	-	-
Foreign borrowing	3,955.84	26.99%	1,067.51	112.10	53.32	256.86	233.11	76.18	107.40	119.04	79.79	29.71	-	-	-
Foreign borrowings from multilateral agencies	3,955.84	10.95%	433.08	37.78	32.86	42.89	104.86	25.68	51.22	91.87	33.39	12.53	-	-	-
Foreign borrowings from bilateral agencies	-		634.43	74.33	20.46	213.97	128.25	50.50	56.18	27.17	46.39	17.18	-	-	-
<b>Pending</b>			<b>(34.60)</b>	<b>(6.05)</b>	<b>(16.13)</b>	<b>8.79</b>	<b>(41.17)</b>	<b>26.25</b>	<b>5.72</b>	<b>(22.94)</b>	<b>(4.30)</b>	<b>15.22</b>	-	-	-
<b>c. Amortization on external debts</b>	<b>(737.39)</b>	<b>76.91%</b>	<b>(567.14)</b>	<b>(13.84)</b>	<b>(48.79)</b>	<b>(114.25)</b>	<b>(52.98)</b>	<b>(34.90)</b>	<b>(10.43)</b>	<b>(100.79)</b>	<b>(45.93)</b>	<b>(145.24)</b>	-	-	-
<b>2. DOMESTIC FINANCING</b>	-	#DIV/0!	<b>155.90</b>	<b>(55.53)</b>	<b>64.90</b>	<b>92.32</b>	<b>35.51</b>	<b>(0.44)</b>	<b>55.45</b>	<b>(38.08)</b>	<b>24.33</b>	<b>(22.57)</b>	-	-	-

**តារាងប្រតិបត្តិការហិរញ្ញវត្ថុឆ្នាំ ២០១៨ TOFE: BUDGET IMPLEMENTATION FOR 2018**

គិតជា មីលានរៀល

Billions of Riels	2018 C.B.L.	Implementation 9 months =75.0%	Jan-18	Feb-18	Mar-18	Apr-18	May-18	Jun-18	Jul-18	Aug-18	Sep-18	Oct-18	Nov-18	Dec-18	
<b>a. Net bank financing (monetary suvey)</b>	-	#DIV/0!	(1,376.44)	300.33	(126.40)	(1,023.76)	(229.89)	(301.01)	40.62	(38.08)	24.33	(22.57)	-	-	-
- Government's deposits		#DIV/0!	(1,376.44)	300.33	(126.40)	(1,023.76)	(229.89)	(301.01)	40.62	(38.08)	24.33	(22.57)	-	-	-
<b>e. \$Acc.-gap between NBC &amp;MEF</b>			1,532.34	(355.85)	191.31	1,116.08	265.40	300.57	14.83	-	-	-	-	-	-
<b>3. OUTSTANDING OPERATIONS</b>			(1,993.33)	(470.72)	(231.55)	(576.45)	(810.83)	(351.74)	(366.80)	680.58	114.49	19.69	-	-	-
Error			0.00	0.00	0.00	(0.00)	(0.00)	0.00	(0.00)	0.00	(0.00)	0.00	-	-	-
<i>Memorandum Item :</i>			-												
Exchange rate (R/\$)			4,015	4,010	4,000	4,032	4,075	4,063	4,059	4,084	4,072	-	-	-	
Provincial revenue	1,673.64	102.93%	1,722.65	68.72	366.05	105.77	223.51	123.31	154.14	314.85	178.15	188.15	-	-	-
o.w. provincial tax revenue	910.44	99.66%	907.36	60.55	91.39	77.85	103.92	72.64	104.09	116.44	122.27	158.22	-	-	-
o.w. prov. non-tax revenue	23.60	210.64%	49.70	4.19	4.48	4.09	8.65	4.31	2.89	15.61	3.81	1.68	-	-	-
o.w. prov. Transfer from central	739.60	103.51%	765.59	3.98	270.18	23.84	110.95	46.37	47.16	182.81	52.08	28.25	-	-	-
Provincial Balance			748.90	53.05	288.95	(15.53)	158.95	31.85	(0.63)	147.87	91.51	(7.12)	-	-	-
Contribution from casino and Lottery	188.44	55.03%	103.70	-	6.53	10.68	11.91	11.68	19.38	-	0.51	43.01	-	-	-

ថ្ងៃសុក្រ ២រោច ខែអស្សុជ ឆ្នាំសិរីទិស័ក ព.ស. ២៥៦២  
រាជធានីភ្នំពេញ ថ្ងៃទី២៦ ខែតុលា ឆ្នាំ២០១៨

ថ្ងៃសុក្រ ២រោច ខែអស្សុជ ឆ្នាំសិរីទិស័ក ព.ស. ២៥៦២  
រាជធានីភ្នំពេញ ថ្ងៃទី២៦ ខែតុលា ឆ្នាំ២០១៨

**អគ្គនាយករង**

**ប្រធាននាយកដ្ឋានស្តីពី** □

**ប្រធានការិយាល័យ**

អគ្គនាយកដ្ឋានគោលនយោបាយ

នាយកដ្ឋានស្តីពី និងវិភាគសេដ្ឋកិច្ច

ស្ថិតិហិរញ្ញវត្ថុសាធារណៈ

ចំណាយបច្ចុប្បន្នស្របតាមក្រសួង ឆ្នាំ ២០១៨/ CURRENT BUDGET EXPENDITURE BY MINISTRY 2018

គិតជាលានរៀល

Million Riels	2018 C.B.L.	Implementation 9 months =75.0%	Jan-18	Feb-18	Mar-18	Apr-18	May-18	Jun-18	Jul-18	Aug-18	Sep-18	Oct-18	Nov-18	Dec-18
<b>Total Current Expenditures</b>	<b>15,218,166</b>	<b>64.7%</b>	<b>9,841,764</b>	<b>711,666</b>	<b>1,020,969</b>	<b>1,037,554</b>	<b>943,160</b>	<b>1,143,579</b>	<b>1,101,709</b>	<b>1,442,136</b>	<b>1,237,841</b>	<b>1,203,150</b>		
<b>I. General Administration</b>	<b>2,426,886</b>	<b>108.8%</b>	<b>2,640,557</b>	<b>134,814</b>	<b>431,059</b>	<b>295,299</b>	<b>287,544</b>	<b>140,256</b>	<b>229,329</b>	<b>463,897</b>	<b>315,571</b>	<b>342,788</b>		
01. Royal Palace	94,699	69.1%	65,442	4,192	6,821	9,389	8,598	3,529	11,652	5,998	6,671	8,591	-	-
02. National Assembly	180,888	98.9%	178,932	48,051	-	22,122	21,381	-	-	44,528	-	42,850	-	-
03. Senate	73,617	98.0%	72,156	18,067	-	8,500	11,209	142	7,439	9,141	584	17,359	-	-
04. Counstitutional Council	11,695	81.8%	9,570	2,358	1,956	-	1,998	706	-	2,543	9	-	-	-
05.1 Council of Minister	409,132	55.7%	228,051	9,362	16,928	25,343	20,329	29,433	31,982	38,519	26,728	29,427	-	-
05.4 CDC	15,040	45.6%	6,855	76	-	155	77	2,143	853	688	588	2,274	-	-
07.2 Interior-Administration	163,582	67.0%	109,677	7,227	7,223	10,124	13,441	19,338	11,647	9,369	17,464	13,844	-	-
08. Relations Assembly and Inspections	38,956	69.6%	27,102	1,076	1,479	1,812	3,271	3,346	3,761	5,067	3,073	4,216	-	-
09. Foreign Affairs and Int'l Cooperation	123,854	60.2%	74,619	572	7,737	20,030	2,030	9,231	8,614	4,968	10,898	10,538	-	-
10. Economy and Finance	772,540	199.2%	1,538,799	33,169	372,314	178,394	185,021	47,483	105,308	258,775	181,140	177,194	-	-
14. Planning	79,886	72.6%	58,030	3,130	3,448	4,668	4,622	4,627	5,936	10,286	9,081	12,232	-	-
28. Urbanization and Construction	150,103	46.3%	69,550	3,171	4,296	5,638	4,959	6,743	9,549	16,111	9,272	9,810	-	-
30. National Election Committee	208,524	64.0%	133,474.53	1,113	2,360	2,393	3,723	6,800	22,443	47,147	41,196	6,300	-	-
31. National Audit Authority	13,810	61.5%	8,490	599	599	1,248	78	681	1,096	1,081	1,596	1,512	-	-
33.1 Anti-corruption Authority	42,600	68.3%	29,083	1,594	4,474	2,443	4,260	2,552	4,254	4,909	2,484	2,113	-	-
34. Public Function	47,961	64.1%	30,728	1,058	1,423	3,041	2,546	3,786	4,792	4,768	4,787	4,527	-	-
<b>II. Defense and Security</b>	<b>3,730,794</b>	<b>71.5%</b>	<b>2,667,538</b>	<b>351,998</b>	<b>251,719</b>	<b>233,251</b>	<b>273,994</b>	<b>266,903</b>	<b>280,045</b>	<b>316,949</b>	<b>371,587</b>	<b>321,092</b>		
06. National Defense	2,198,378	71.6%	1,572,941	156,629	156,783	146,888	183,621	167,381	163,787	184,527	242,201	171,124	-	-
07.1 Interior - Public Security	1,394,095	73.3%	1,022,213	191,059	89,669	79,521	85,386	92,611	106,703	118,767	117,843	140,655	-	-
26. Justice	138,321	52.3%	72,384	4,310	5,268	6,843	4,987	6,911	9,555	13,656	11,543	9,313	-	-
<b>III. Social Administrative</b>	<b>5,658,959</b>	<b>67.4%</b>	<b>3,813,536</b>	<b>200,265</b>	<b>284,779</b>	<b>453,278</b>	<b>310,100</b>	<b>648,937</b>	<b>512,625</b>	<b>565,393</b>	<b>424,794</b>	<b>413,366</b>		
11. Information	78,294	68.5%	53,600	2,389	3,067	6,612	10,679	8,237	5,623	5,850	4,273	6,871	-	-
12. Public Health	1,393,974	65.0%	906,398	24,356	35,739	77,275	46,898	293,470	136,151	168,629	66,005	57,875	-	-
16. Education, Youth and Sport	2,705,457	66.1%	1,789,035	108,668	147,384	194,203	179,348	216,165	258,720	261,848	221,512	201,188	-	-
18. Culture and Fine-Arts	190,101	79.6%	151,304	3,030	11,618	39,648	8,766	23,655	8,564	9,006	29,701	17,316	-	-
19. Environment	82,357	62.4%	51,391	2,750	3,565	4,236	4,404	5,945	6,110	8,715	5,273	10,394	-	-
21. Social Affair & Veteran	887,312	76.8%	681,431	50,900	72,953	114,509	45,007	76,135	70,252	84,183	73,328	94,164	-	-
23. Public Worship and Religion	64,504	67.8%	43,716	1,848	2,690	5,242	4,023	4,793	4,872	5,865	7,032	7,352	-	-
24. Woman Affairs	47,601	66.8%	31,783	1,179	1,647	3,633	3,455	4,165	4,657	5,283	3,530	4,235	-	-
32. Labour and Vocational Training	209,359	50.1%	104,877	5,146	6,115	7,922	7,521	16,372	17,677	16,014	14,140	13,971	-	-
<b>IV. Economy Administrative</b>	<b>1,379,185</b>	<b>47.4%</b>	<b>653,078</b>	<b>24,588</b>	<b>53,412</b>	<b>47,902</b>	<b>60,634</b>	<b>70,555</b>	<b>69,885</b>	<b>88,427</b>	<b>117,619</b>	<b>120,058</b>		
05.3 Civil Aviation Secretariate	49,824	46.4%	23,121	964	967	923	1,015	1,019	2,392	2,700	2,874	10,268	-	-
13. Industry, Mines and Energy	49,998	42.6%	21,303	1,000	1,425	2,011	1,875	2,719	2,265	2,749	3,052	4,208	-	-
15. Commerce	127,310	50.5%	64,228	3,837	5,221	5,201	5,805	7,937	6,028	15,923	5,929	8,348	-	-
17. Agriculture, Forestry and Fishery	245,009	58.0%	142,094	7,152	9,172	11,957	14,787	19,417	14,972	22,265	25,747	16,624	-	-
20. Rural Development	169,137	34.7%	58,763	1,776	2,492	3,391	4,103	5,782	7,664	8,895	12,905	11,755	-	-
22. Posts and Telecommunications	66,527	54.3%	36,120	1,434	2,240	3,575	3,483	4,341	4,626	5,502	9,202	9,202	-	-
25. Public Works and Transport	399,444	41.8%	166,824	3,984	17,317	9,549	14,565	13,911	11,760	14,520	40,263	40,955	-	-
27. Tourism	88,559	65.7%	58,165	1,367	10,506	4,869	5,388	6,323	9,585	6,419	8,019	5,689	-	-
29. Water Resources and Meteorology	130,175	39.5%	51,428	1,679	2,794	3,814	6,154	6,543	6,563	6,392	9,090	8,399	-	-
35. Industry and Handicrafts	53,203	58.3%	31,030	1,395	1,802	3,946	3,366	3,421	4,313	3,937	4,239	4,610	-	-
<b>V. Miscellaneous</b>	<b>2,022,342</b>	<b>3.3%</b>	<b>67,055</b>	<b>-</b>	<b>-</b>	<b>7,824</b>	<b>10,888</b>	<b>16,928</b>	<b>9,826</b>	<b>7,470</b>	<b>8,271</b>	<b>5,846</b>		
99.Unexpect Expenditure	2,022,342	3.3%	67,055	-	-	7,824	10,888	16,928	9,826	7,470	8,271	5,846	-	-

## **NOTE**



TOFE report was issued based on temporary data as following:

1. Data on Revenue at National level was received on October 25, 2018
2. Data on Expenditure at National Level was received Octobe 13, 2018
3. Data on Loan and Grant of multilateral and bilateral was retrieved on Octobe 24, 2018
4. Financial Operation Data (Credit Bank) was received on October 22, 2018

TOFE report will be updated in the next released.

